

第2回NBF岩手ダブルスフェスティバル2025126



Oil Pattern Distance:	44 Feet	Reverse Brush Drop:	44 Feet	Oil Per Board:	50 uL
Forward Oil Total:	13.55 mL	Reverse Oil Total:	11.05 mL	Volume Oil Total:	24.6 mL
Forward Boards Crossed:	271 Boards	Reverse Boards Crossed:	221 Boards	Total Boards Crossed:	492 Boards

	Start	Stop	Loads	Speed	Crossed	Start	End	Feet	T.Oil
1	2L	2R	1	14	37	0.0	0.0	0.0	1850
2	6L	6R	2	14	58	0.0	3.9	3.9	2900
3	7L	7R	2	18	54	3.9	9.0	5.1	2700
4	9L	9R	2	18	46	9.0	14.1	5.1	2300
5	10L	10R	2	18	42	14.1	19.2	5.1	2100
6	12L	12R	2	18	34	19.2	24.3	5.1	1700
7	2L	2R	0	30	0	24.3	44.0	19.7	0

Navigation: Forward Reverse More

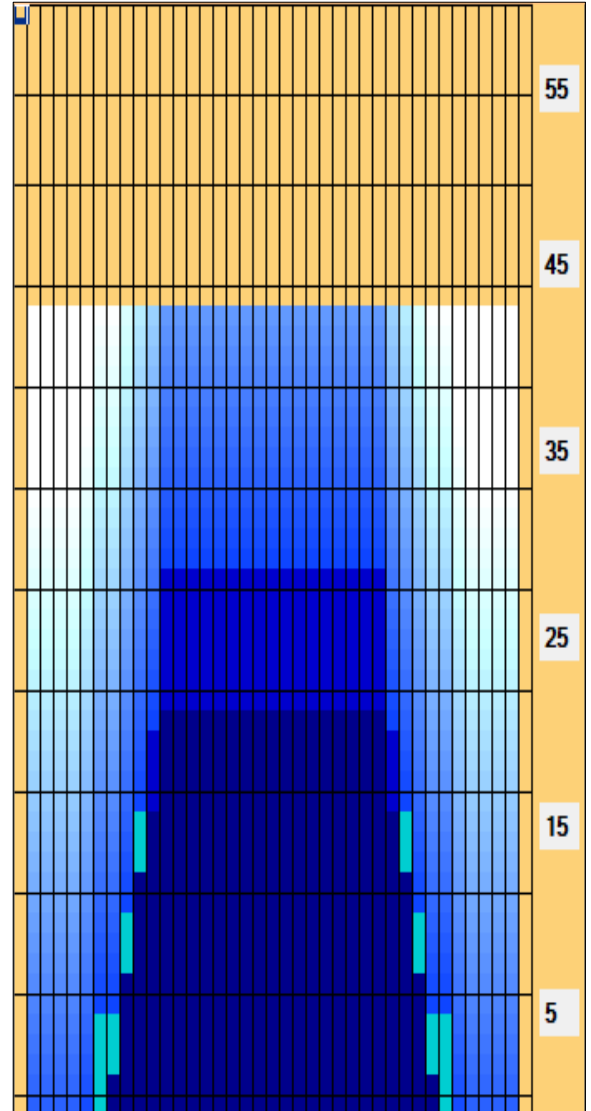
	Start	Stop	Loads	Speed	Crossed	Start	End	Feet	T.Oil
1	2L	2R	0	30	0	44.0	31.0	-13.0	0
2	12L	12R	3	18	51	31.0	23.4	-7.6	2550
3	11L	11R	3	18	57	23.4	15.8	-7.6	2850
4	10L	10R	2	18	42	15.8	10.7	-5.1	2100
5	9L	9R	2	18	46	10.7	5.6	-5.1	2300
6	8L	8R	1	14	25	5.6	3.7	-1.9	1250
7	2L	2R	0	18	0	3.7	0.0	-3.7	0

Navigation: Forward Reverse More

Conditioner:
Type In or Select One

TransferType:
Type In or Select One

- Forward
- Reverse
- Combined
- Buff



Item Description	3L-7L:18L-18R Outside Track:Middle	8L-12L:18L-18R Middle Track:Middle	13L-17L:18L-18R Inside Track:Middle	18L-18R:17R-13R Middle: Inside Track	18L-18R:12R-8R Middle:Middle Track	18L-18R:7R-3R Middle:Outside Track
Track Zone Ratio	10	1.59	1	1	1.59	10

