

第13回NBF岩手県理事長杯



Oil Pattern Distance:	41 Feet	Reverse Brush Drop:	34 Feet	Oil Per Board:	50 uL
Forward Oil Total:	15.3 mL	Reverse Oil Total:	11.7 mL	Volume Oil Total:	27 mL
Forward Boards Crossed:	306 Boards	Reverse Boards Crossed:	234 Boards	Total Boards Crossed:	540 Boards

	Start	Stop	Loads	Speed	Crossed	Start	End	Feet	T.Oil
1	3L	3R	1	18	35	0.0	0.0	0.0	1750
2	5L	5R	1	18	31	0.0	2.5	2.5	1550
3	7L	7R	2	22	54	2.5	8.7	6.2	2700
4	8L	8R	3	22	75	8.7	18.0	9.3	3750
5	9L	9R	3	22	69	18.0	27.3	9.3	3450
6	10L	10R	2	26	42	27.3	34.6	7.3	2100
7	2L	2R	0	30	0	34.6	41.0	6.4	0

Navigation: Forward Reverse More

	Start	Stop	Loads	Speed	Crossed	Start	End	Feet	T.Oil
1	2L	2R	0	30	0	41.0	33.0	-8.0	0
2	12L	12R	2	26	34	33.0	25.7	-7.3	1700
3	10L	10R	3	22	63	25.7	16.4	-9.3	3150
4	8L	8R	3	18	75	16.4	8.8	-7.6	3750
5	5L	5R	2	14	62	8.8	4.9	-3.9	3100
6	2L	2R	0	14	0	4.9	0.0	-4.9	0

Navigation: Forward Reverse More

Conditioner:
Type In or Select One

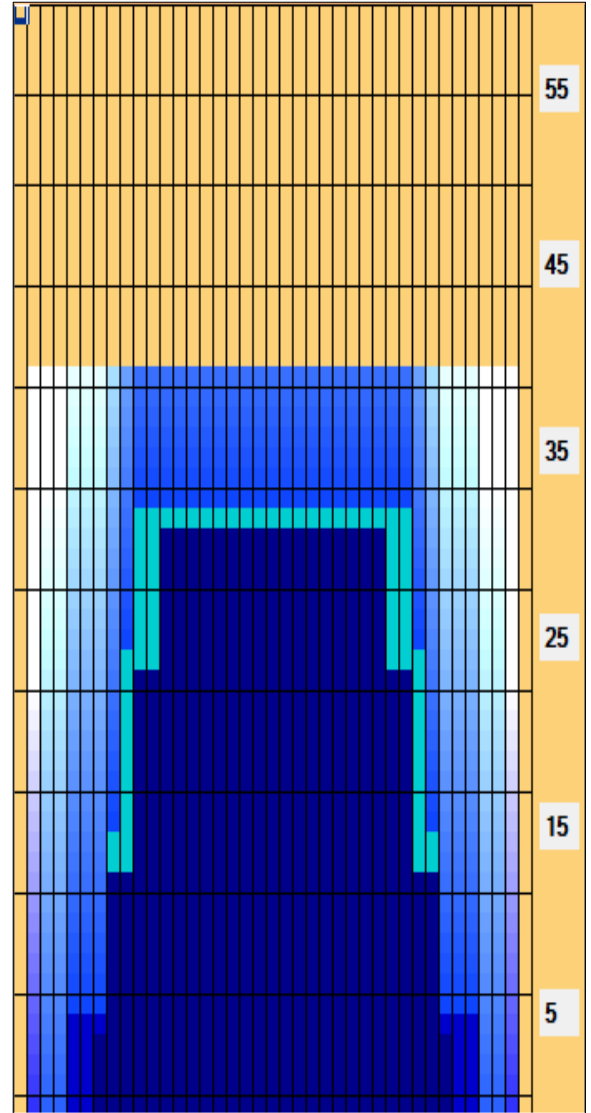
TransferType:
Type In or Select One

Forward

Reverse

Combined

Buff



Item Description	3L-7L:18L-18R Outside Track:Middle	8L-12L:18L-18R Middle Track:Middle	13L-17L:18L-18R Inside Track:Middle	18L-18R:17R-13R Middle: Inside Track	18L-18R:12R-8R Middle:Middle Track	18L-18R:7R-3R Middle:Outside Track
Track Zone Ratio	6.88	1.24	1	1	1.24	6.88

